



By Appointment to  
Her Majesty the Queen  
Manufacturers of Access Equipment  
Clow Group Ltd., Glasgow



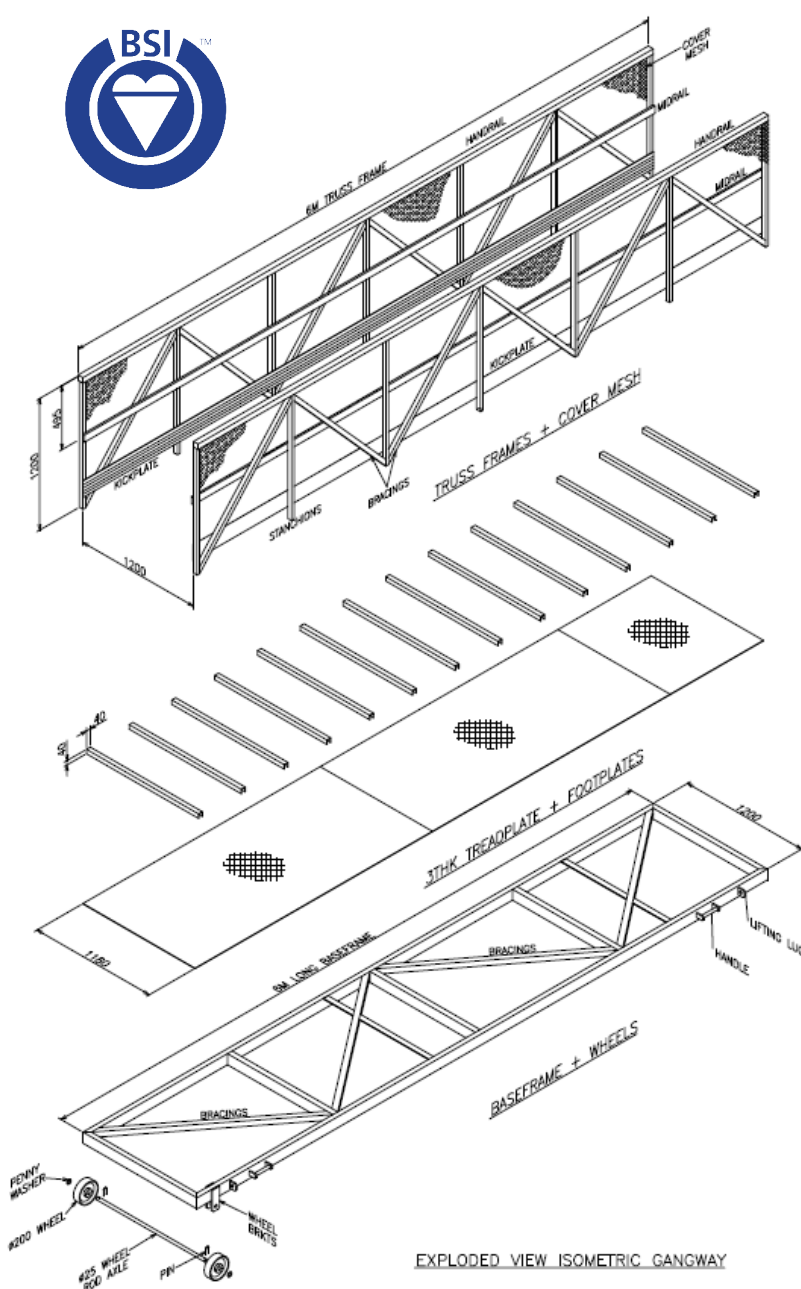
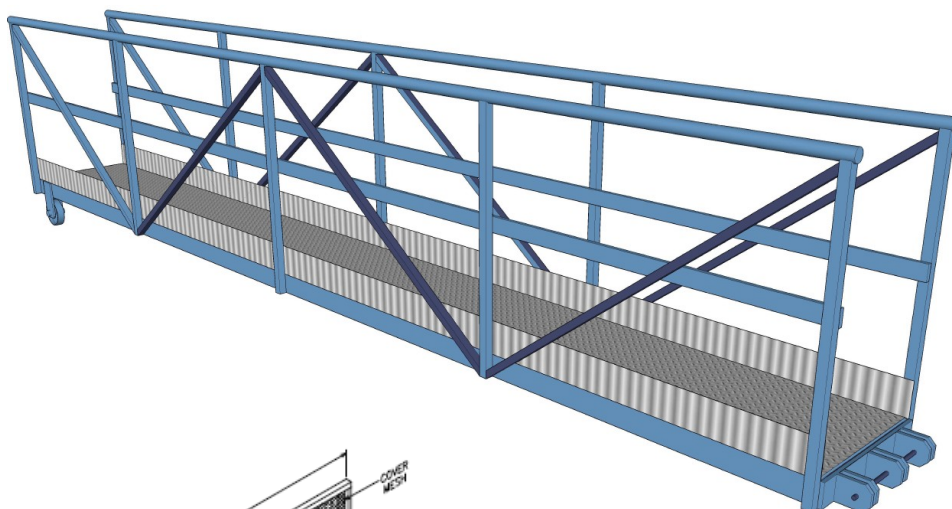
Clow Group Ltd

# Marine Gangways



## Marine Gangways from the Clow Group Ltd.

**Gangways are manufactured to BS MA 78:1978 standard and can be constructed in galvanised steel, aluminium and glassfibre or any combination of these three materials.**



**Our standard gangways are normally one metre wide with the length dependant on customer requirements.**

**Gangways come complete with a non-slip walking surface, heavy duty securing lugs on the shore side and rolling wheels on the lower pontoon side.**

The hand railing used on our gangways also complies with BS MA 78:1978 but where the gangway is used at a severe incline, the height of the handrail is increased and non-slip slats are laid across the flooring to give improved grip at steeper inclines.



# Clow Group Ltd

A hinged gangway designed and fabricated by the Clow Group for the RFA Fort George, a combined fleet stores ship and tanker of the Royal Fleet Auxiliary - specifically designed to allow for tidal movement and the changes experienced in relative ship to dock heights.

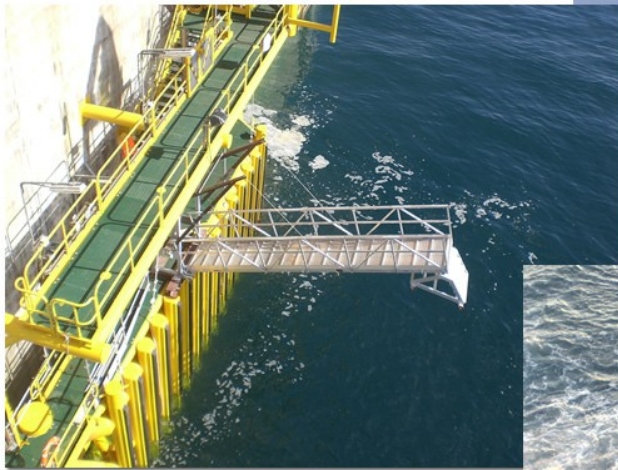


A gangway installation designed and manufactured by the Clow Group for Ardfarn Marina on the west coast of Scotland.





**Manually winched gangways designed and manufactured for use by Exxon Mobil for ship to ship and ship to oil installation transfers off the coast of Italy in the Adriatic Sea.**



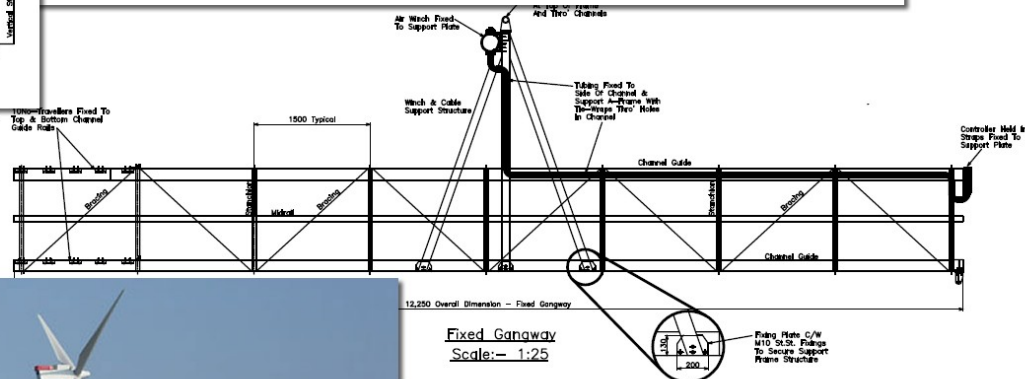
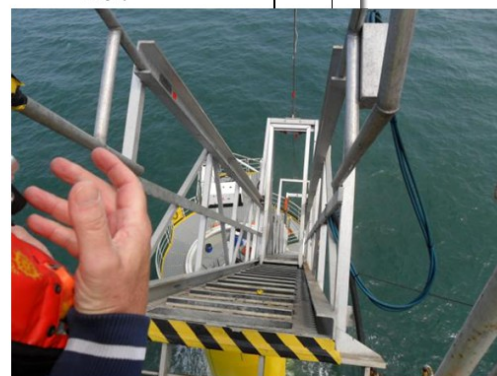
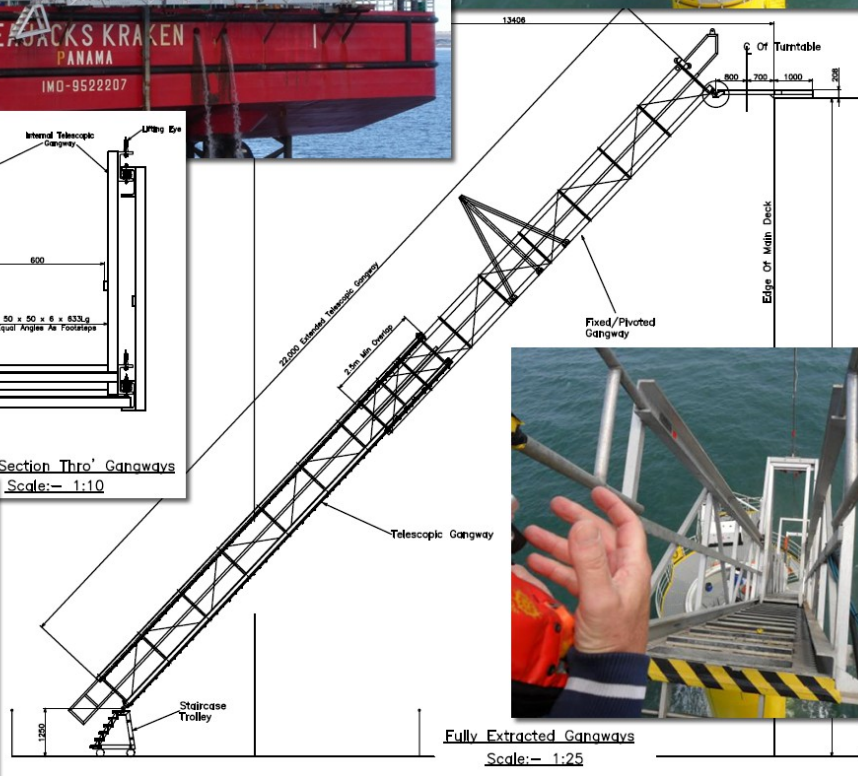
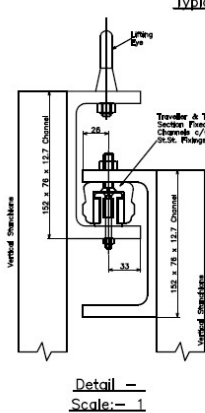
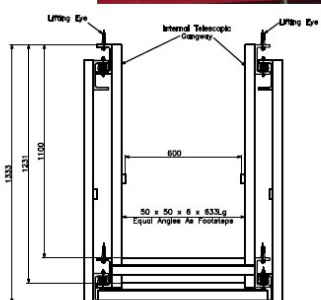
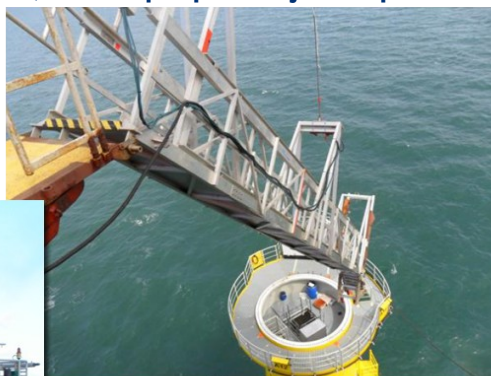
**EXXON  
Mobil**



**CG**  
Clow Group Ltd



An extending gangway built for Seajacks' Kraken, a self-propelled jack up vessel.





**A gangway designed by the Clow Group and installed at Brennan Loch, Strathclyde.**





A specialist all aluminium gangway for use by a Yarrows built Royal Naval minesweeper.





**An angled gangway, designed to pivot on a central point, built for the Argentine Navy.**



**A Dolphin fast access telescopic gangway designed for use on the River Thames.**





A gangway designed and built for Stena by the Clow Group.





A pontoon access gangway on the Great Cumbrae designed and built for Sport Scotland.





## Marine Access Ladders

The Clow Group have been manufacturing ladders and access equipment since 1913 and were the first ladder maker in the UK of glassfibre ladders.

With over 40 years experience in the manufacture of glassfibre access equipment the Clow Group have created a range of specialist glassfibre ladders which are designed for use within harsh and extreme conditions – these ladders are ideal for use within marine applications and marine environments.

The Clow Marine Ladder is a high specification ladder featuring box section stiles manufactured from glass reinforced plastic. The rungs themselves are constructed from serrated non-slip resin matrix glass reinforced tubes, which are fully bonded into the specially designed box section stiles.

This type of ladder offers a high degree of weather resistance and provides a structure which is totally electrically insulated. Completely impervious to salt water, the Clow Marine Ladder has the ability to handle the extremes of being permanently submerged in sea water.

The Clow Marine Ladder is an ideal solution for marinas, harbours, quaysides or any location where safe and secure access is required within a marine environment.



## Marine Micro-Mesh Gratings

Clow Marine Micro-Mesh Gratings offer a hard wearing, high grip, maintenance free solution for high traffic areas such as gangways and walkways.

With a 25 year life span, high corrosion resistance and fire resistance, full electrical insulation and an anti-spark, anti-slip surface, Clow Micro-Mesh Glassfibre Gratings are ideal for any number of surface applications requiring a safe, stable and maintenance free solution.



By Appointment to  
Her Majesty the Queen  
Manufacturers of Access Equipment  
Clow Group Ltd., Glasgow



**Clow Group Ltd**

**185 Broad Street, Glasgow, G40 2QR**  
**Tel. +44 (0) 141 554 6272 Fax. +44 (0) 141 551 0813**

**Email. [enquiries@clowgroup.co.uk](mailto:enquiries@clowgroup.co.uk)**  
**Web. [www.clowgroup.co.uk](http://www.clowgroup.co.uk)**

**London • Midlands • Belfast • Glasgow**